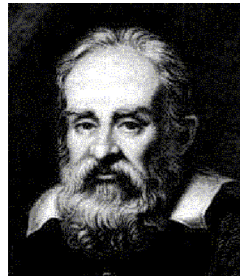


# Galileo, Newton and other „conspiracy nuts“...

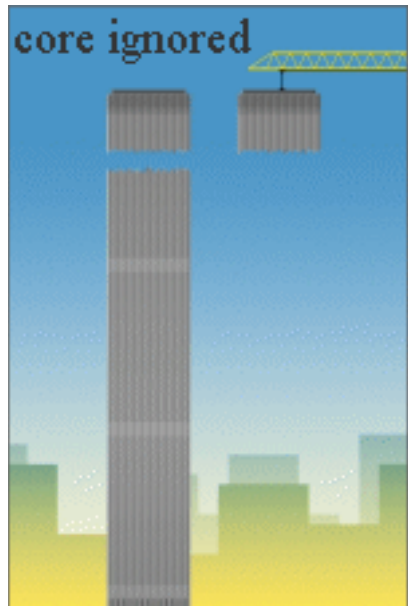


Galileo Galilei, physicist, 1564-1642.

(The archetypal conspiracy nut. Fortunately, we had the Catholic Inquisition back then to restrain his insane ramblings.)

According to NIST, the Twin Towers fell in 11 (WTC1) and 9 (WTC2) seconds. Both buildings were 1,368 ft of height. (WTC1 1,727 ft with antenna)

Galileo's law of falling bodies is  $h = 1/2gt^2$  or  $t = \sqrt{2h/g}$  and describes the fall of objects within earth's gravitational field without any resistance. From 1,368 ft of height this fall takes 9.2s -- but how can it be then that structures which supported hundreds of thousands of tons in the sky for decades suddenly offered unnoticeably more resistance than...nothing?



Let's do the thought experiment illustrated to the left: On one side the top falls through the rest of building, on the other only through air -- which would you say hits bottom faster?

But beware! If you think it's the top suspended from the crane, you have become a „conspiracy nut“ and the mass-medial inquisition has you in its sights -- Bill O'Reilly will call Fox Security!

But don't fear, we are with you -- and so is Mr. Galileo Galilei.



Isaac Newton, physicist, 1643-1727.

(Note the dates! This reincarnation of conspiracy nuttery even arrogated to himself laws which *everything* has to obey!)

This gentleman laid the foundation of classical („Newtonian“) mechanics, resting among other things on the laws of conservation of energy and momentum. Both are relevant in this case:

## Conservation of Energy

If the buildings fell without resistance, it's implicit that their potential energy was completely transformed into kinetic energy. The problem is that obviously, a significant amount of energy had to be expended to obliterate the steel superstructure and pulverize the concrete floors. It would then no longer be available in its kinetic form, and thus would have decelerated the fall. As this was not observed, there must have been another, significant source of energy -- explosives?

## Conservation of Momentum

Even if we assumed that the steelframe somehow disintegrated without energy expense, conservation of momentum dictates that two colliding bodies maintain their combined momentum post-collision. A floor that falls on another and drags it along subsequently moves with half its pre-impact velocity, because the moving mass is doubled. That mechanism would of course slow down the fall, but again this was not observed.

Either the laws of nature or the official story are wrong -- take your pick.



The impact gash of the WTC1 -- an Inferno?

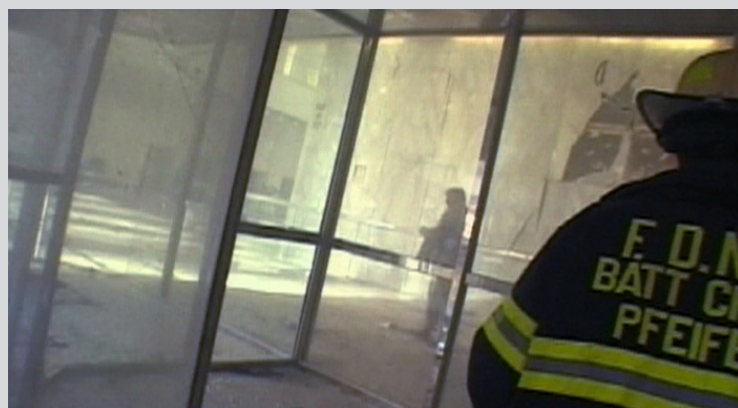
Here's a transcript of radio communications from the South Tower, 9:52am:

*„Battalion Seven ... Ladder 15, we've got two isolated pockets of fire. We should be able to knock it down with two lines. Radio that, 78th floor numerous 10-45 Code Ones.“*

Floors 78-84 were affected by the impact, only 7 minutes later, the building collapsed.

343 firefighters died in the WTC. RIP. More first responders are suffering and dying from respiratory illnesses caused by the toxic dust, after the EPA (Environmental Protection Agency), commanded by the White House, stated: *„the air is safe to breathe“*...

Mayor Giuliani knew of the imminent collapses -- why not the FDNY?



Pictures of the lobby of WTC1 on arrival of the firefighters. The windows are blown out and the marble panels on the wall are cracked and have partially fallen off. Several eyewitnesses, some of them critically injured, reported a powerful detonation in the sub-basement, occurring a few seconds **before** AA11 hit some thousand feet above.

