

**WTC LEASES**  
OVERALL LEASES OF:  
WTC 1, 2, 4 & 5

99 YEAR LEASE Signed May 2001  
Financed By

**SILVERSTEIN PROPERTIES PARTNERS:**  
WESTFIELD AMERICA,  
LLOYD GOLDMAN  
Requested from ALLEN REISS of PANYU  
to Transition to Fully Operate Towers before 9/11

**AWARDED \$4.55 Billion**  
Settlement Insurance Payout

**LARRY SILVERSTEIN**  
WTC Manager

**JEFF WHARTON**  
Formerly of TISHMAN SPEYER

**JEROME HAUER**  
Retired

**JOHN O'NEILL**

**GMAC COMMERCIAL MORTGAGE**  
TOTAL \$726 MILLION  
(Sold to Securities Investors)



**SCOTT FORBES** (9/11 Mysteries)  
Reported Extraordinary "Power Down" of top 50% of building 3 weeks prior to 9/11 Ignored by 9/11 Commission

Molten Steel / Iron poured out of the North East Corner of the 80th Floor

FLOORS 80 - 82 "COLD SPOT" (NORTH FACE)

FLOORS 78-82 S.W. CORNER

**United Airlines Flight #175**  
Chicago Board Options Exchange (CBOE)  
Had 4744 "PUT" Options Versus 396 "CALL" Options on Sept. 6 & 7, 2001; (six times higher than normal)

FLOORS 77 & 78 FULL FIREPROOFING UPGRADES In 1998 modified S.E. corner of floor 78 In 1999, (exactly where aircraft hit).

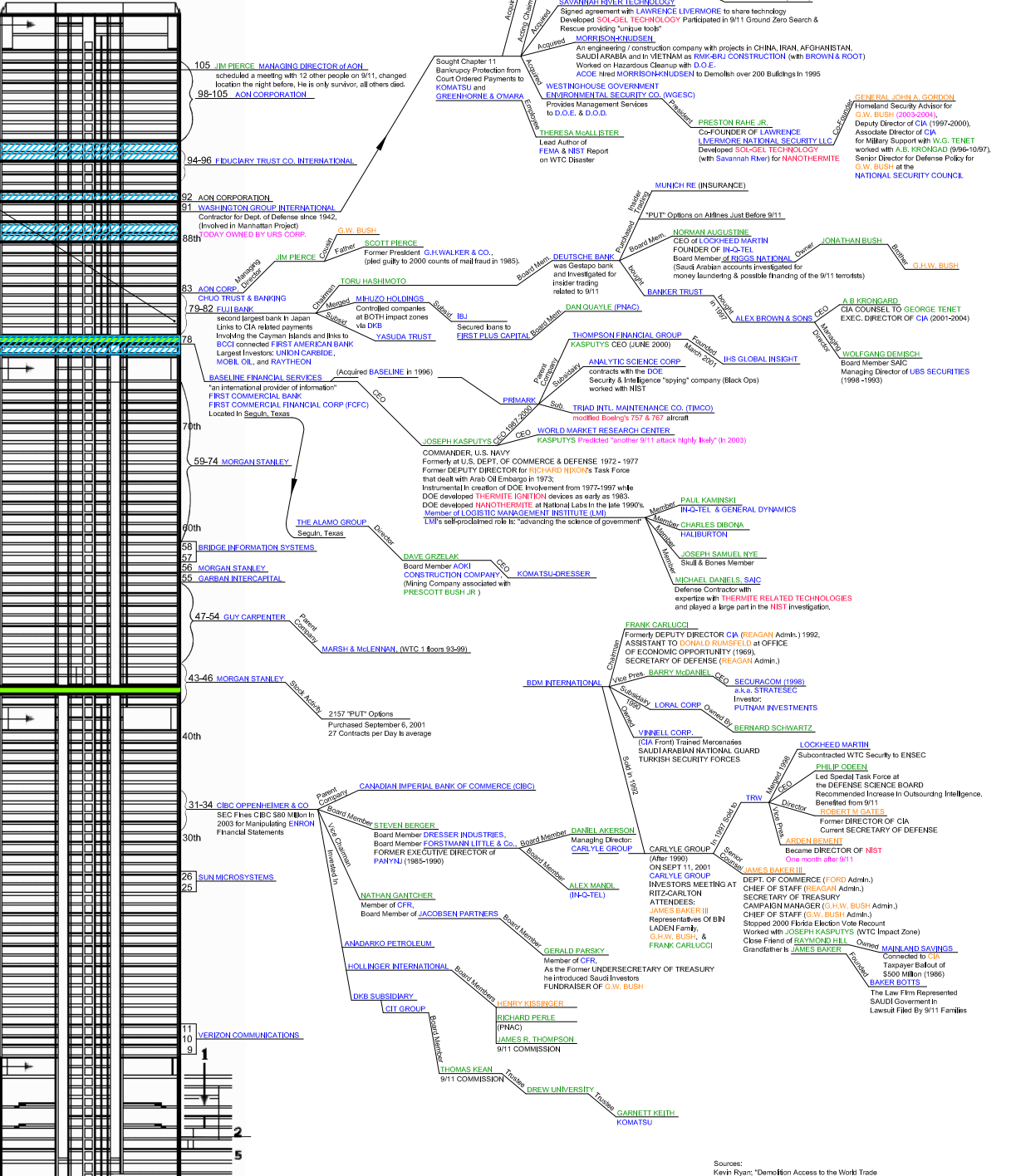
44th 3

LOCATION OF SQUIBS 4

RODRIGUEZ Comments in '9/11 Mysteries' - "a lot of noise"

- 1 Ancillary building
- 2 Plaza Level
- 3 Sky-Lobby
- 4 Tech. Services
- 5 Underground car park

**SKY-LOBBY**  
**UPGRADED**



Sources:  
Kevin Ryan: "Demolition Access to the World Trade Center Towers, Part 1", "9/11 Essay Pack", and "Carlyle, Kissinger, SIAC and Haliburton: A 9/11 Convergence";  
Wikipedia - List of Tenants in WTC 1 & 2;  
Michael C. Ruppert: "Suppressed Details of Criminal Insider Trading: Lead Directly into CIA's Highest Ranks";  
Towers Graphic from Skyscraper.org; VIVA2 elevation.

**DRAFT**

**WORLD TRADE CENTER TWO** *EXPLOSIVE CONNECTIONS*

Compiled by:  
**Jonathan H. Cole, P.E.**  
Initial Release Sept. 11, 2010